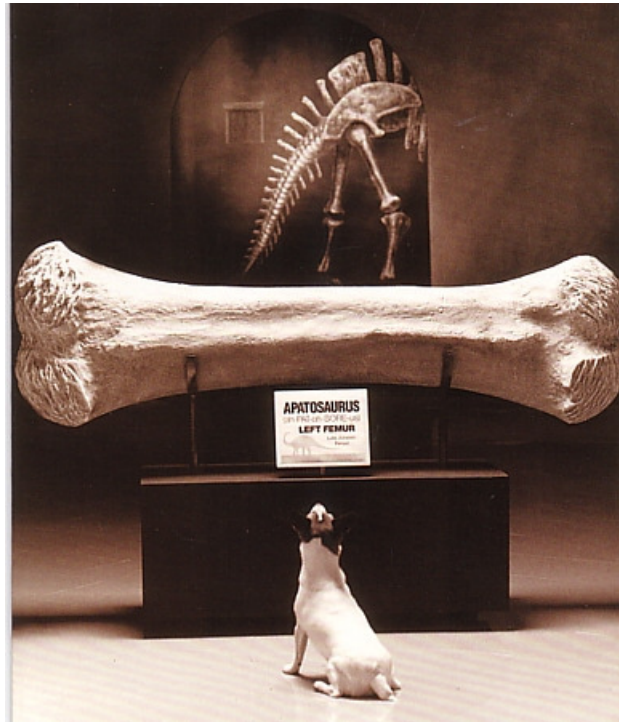


Cleveland Institution of Engineers

How to study the Stone Age in the Space Age



Dr Tim Thompson

*Senior Lecturer in Crime Scene Science,
School of Science & Engineering,
Teesside University*

**Tuesday 12th January 2010, 5:30pm
Centuria Building, Teesside University**

Biological anthropology is the study of the human body in order to understand individuals and populations. Traditionally it involves the examination of the skeleton using very simple and basic equipment. Exciting advances over the past few years have allowed us to apply increasingly complex technologies to this subject and unlock more and more information about our collective past, and about how we live our lives today.



Event sponsored by the Forensic Science Society